

FOREVER Solvent-Dark & FOREVER Solvent-Dark Metallic can be printed on all Solvent-Printers

- ▶ **Roland** ▶ **Mimaki**
- ▶ **Mutoh** ▶ **Seiko**

with all types of Inks

- ▶ **Real Solvent** ▶ **Eco-Solvent**
- ▶ **Mild Solvent** ▶ **Light Solvent**

Test of UV-Inks in process.
For updated information visit our Website.



FOREVER GmbH
 Heppenheimer Str. 31 - 33
 68309 Mannheim/Germany
 Tel.: +49 (0)6 21/7 20 68 - 0
 Fax: +49 (0)6 21/7 20 68 - 40
 E-Mail: info@forever-ots.com

www.forever-ots.com

 **SOLVENT-DARK & SOLVENT-DARK Metallic**

WORLD NOVELTY

- ▶ Suitable for 100% cotton and mixed fibers
- ▶ Photo-realistic image quality in glossy or matte finish
- ▶ Same printing results on all colors
- ▶ Extremely elastic product
- ▶ Wash fastness and color brilliance for professional applications
- ▶ Multi-Color Flex application



FOREVER SOLVENT-DARK & **FOREVER SOLVENT-DARK Metallic**

These two brand new developments from FOREVER fulfill the highest expectations and open totally new fashion opportunities.

The new generation of environmentally safe Solvent Inks (Eco-Solvent, Mild-Solvent, Light-Solvent) for indoor usage and the Hybrid Plotters (Printer/Cutter) make it extremely easy for Screen Printers to print on dark garments and other substrates in the highest digital quality.

FOREVER SOLVENT-DARK

This is not a Flex Color Chart...

This is just 0,001 % from what you can achieve!

CYAN 100% CYAN	MAGENTA 100% MAGENTA	YELLOW 100% YELLOW	GREEN 40% CYAN 100% YELLOW	GOLD 35% MAGENTA 100% YELLOW
SILVER 50% BLACK	RED 100% MAGENTA 95% YELLOW	SAND 5% MAGENTA 80% YELLOW	VIOLET 35% CYAN 95% MAGENTA	ROYAL BLUE 90% CYAN 55% MAGENTA
PEACH 36% MAGENTA 80% YELLOW	PURPLE 10% CYAN 85% MAGENTA 48% YELLOW	ORANGE 90% MAGENTA 80% YELLOW	MARINE 90% CYAN 60% MAGENTA 30% BLACK	LIGHT BLUE 40% CYAN 4% MAGENTA 2% YELLOW
PINK 56% MAGENTA 16% YELLOW	JADE 80% CYAN 45% YELLOW	PISTACHIO 20% CYAN 5% MAGENTA 100% YELLOW	DARK YELLOW 25% MAGENTA 100% YELLOW	BROWN 70% MAGENTA 90% YELLOW 30% SCHWARZ

WHAT YOU SEE IS WHAT YOU GET!

Matching your customers exact colors is not a problem anymore.

Printed with Solvent (Eco-Solvent) inks it is easy to achieve the desired color, which won't change after the transferring process.



RED No. 1 100% MAGENTA 100% YELLOW	RED No. 2 100% MAGENTA 60% YELLOW	RED No. 3 10% CYAN 100% MAGENTA 80% YELLOW
RED No. 4 87% MAGENTA 70% YELLOW	RED No. 5 20% CYAN 100% MAGENTA 70% YELLOW	RED No. 6 6% CYAN 98% MAGENTA 56% YELLOW
RED No. 7 100% MAGENTA 43% YELLOW 19% BLACK	RED No. 8 100% MAGENTA 100% YELLOW 20% BLACK	RED No. 9 27% CYAN 96% MAGENTA 92% YELLOW

FOREVER SOLVENT-DARK **Metallic**

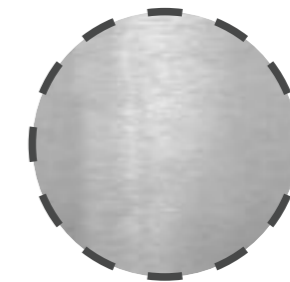
Gold, Silver or any other metallic color... Here is the solution!!!

CYAN 100% CYAN	MAGENTA 100% MAGENTA	YELLOW 100% YELLOW	GREEN 40% CYAN 100% YELLOW	GOLD 35% MAGENTA 100% YELLOW
SILVER 50% BLACK	RED 100% MAGENTA 95% YELLOW	SAND 5% MAGENTA 80% YELLOW	VIOLET 35% CYAN 95% MAGENTA	ROYAL BLUE 90% CYAN 55% MAGENTA
PEACH 36% MAGENTA 80% YELLOW	PURPLE 10% CYAN 85% MAGENTA 48% YELLOW	ORANGE 5% CYAN 85% MAGENTA 70% YELLOW	MARINE 90% CYAN 60% MAGENTA 30% BLACK	LIGHT BLUE 40% CYAN 4% MAGENTA 2% YELLOW
PINK 56% MAGENTA 16% YELLOW	JADE 80% CYAN 45% YELLOW	PISTACHIO 20% CYAN 5% MAGENTA 100% YELLOW	DARK YELLOW 25% MAGENTA 100% YELLOW	BROWN 70% MAGENTA 90% YELLOW 30% SCHWARZ

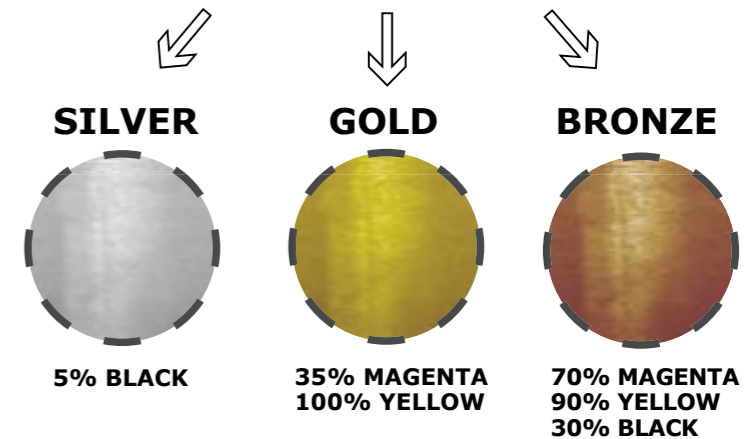
METALLIC COLORS

FOREVER Solvent-Dark Metallic is a transfer material with silver coverage. By printing on this unique material with Solvent (Eco-Solvent) inks you can achieve Gold, Silver, Bronze or any other color in a metallic finish.

HOW DOES IT WORK?



For best metallic effects reduce the color density by 25%.



PRINTABLES

TEXTILES

- ▶ 100% cotton
- ▶ Denim
- ▶ 95% Cotton + 5% Lycra
(Cotton fibres with more than 5% Lycra not recommended)
- ▶ Synthetic fibers
(require own tests)

OTHERS

- ▶ Leather
- ▶ Synthetic Leather
- ▶ Polyamid (Nylon, Perlon)
- ▶ Polyester
- ▶ Coated Paper
- ▶ Wood
- ▶ Backpack Material

FOREVER SOLVENT-DARK &
FOREVER SOLVENT-DARK Metallic



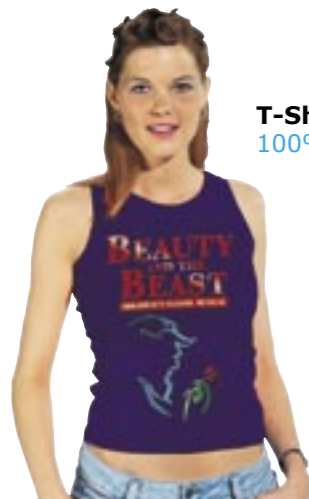
Jacket
Leather



Jacket
Polyamid



Bag
Backpack Material



T-Shirt
100% Cotton



Bag & Purse
Synthetic Leather



Bags
Backpack Material



Umbrella
Polyamid



Bag
Leather



T-Shirts
100% Polyester



Cosmetic Bag
Backpack Material



Boots
Leather



T-Shirt
100% Polyester



Calendar
Coated Paper



Dress
100% Cotton



Sock
100% Cotton



Skirt
Denim



Board
Wood



Agenda
Coated paper

APPLICATION - STEP by STEP

1 Creating the design



For best results use Photoshop, Illustrator or FreeHand for designing the image and CorelDraw for defining the cutlines.



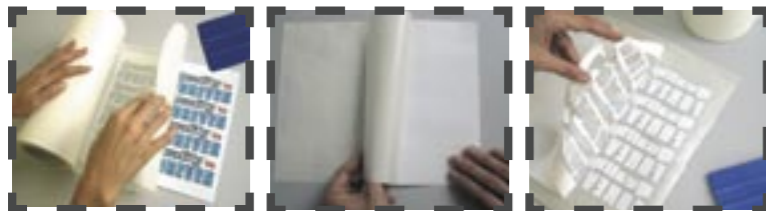
2 Printing and Cutting (Fully automated transfer production from the roll.)



FOREVER Solvent-Dark and FOREVER Solvent-Dark Metallic can be printed on all Ink-Jet Printers with any type of Solvent or Eco-Solvent Inks.



3 Manual Application



TRANSFERRING
onto the
Application Tape

WEEDING
of the
backing paper

WEEDING
of the
unprinted areas

The Solvent-Dark film can also be first weeded and then transferred onto the Application Tape. Nevertheless the process shown above achieves a better result for the detailed designs lettering.

4 Heat Transfer



INSTA 728



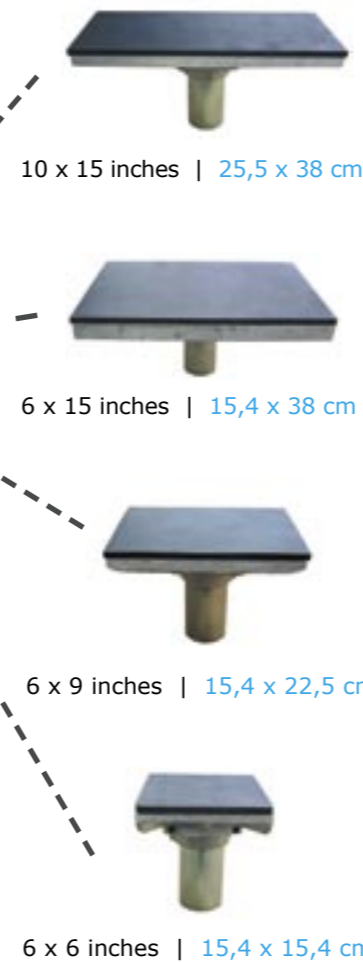
READY!

NEW ATTACHMENTS

FOR INSTA 728



Heat transfers on bags, jackets or any other small articles made easy with the adjustable new attachments.



SPECIAL APPLICATIONS

DIGITAL DOMING

FOREVER Solvent-Dark and FOREVER Solvent-Dark Metallic are both extremely suitable for DOMING.

- ▶ No air bubbles
- ▶ High image quality
- ▶ Easy handling



Doming is the process of adding a glass-like, plastic-resin bubble to a 2-D surface to create an eye-catching 3-D product. Useable on: name badges, caps, garment labels, bottles, buttons, bags, key tags and many more.

PRINTING LABELS

Printing Labels with FOREVER's Solvent Products is another new opportunity for textile manufacturers.

NEW FOREVER Solvent-Transparent is only for white garments and doesn't require a contour cutter.

